

innoracks METAL ENCLOSURES UP TO IP66



About Us

We, **Ipack Solutions**, branded as **INNORACKS** are well established, reputed & leading designer, manufacturer, and supplier of standard and customized Servers & Networking Racks in India since 2017 offer a wide range of racks for computers, electronic and communication equipment. We also manufacture a range of accessories and custom products to suit your special networking requirements.

Company History :

We are a **partnership**-based business organization engaged in manufacturing and supplying a vast assortment of Server Racks, Networking **Racks**, **Telecom Support Products**, **Tele-com Racks**. Our firm is reckoned among the clients for its transparent business dealings, qualitative product line, and prompt delivery schedules. The products offered by us are highly demanded and appreciated in the industry for their unsurpassed quality standards and exceptional features like sturdy construction, precise designs, dimensional accuracy, seamless performance, corrosion resistance, and long service life. Our range of products is developed using advanced production techniques and quality-approved materials that are sourced from the trusted vendors of the market.

Certifications :

Our products conform stringently to DIN 41494 and are suitable for integrating any equipment constructed in compliance with the 19" standard & customized. We are accredited with an ISO 9001:2015 & ISO 14001: 2015 certificate. We believe in continual improvement in all our endeavors.



सत्यमेव जयते





Vision :

- Our vision is to be the leading IT Infrastructure, technologically advanced one-stop Solutions & Service Provider.
- Be partners in progress with progressive industries by working with them in concurrent engineering processes.
- We at Ipack Solutions are committed to Prompt delivery and installation | Reasonable pricing | Customer satisfaction



Mission :

- To deliver, innovative, reliable & effective products, solutions & services that exceed our customer's expectations.

Facilities :

- With a skilled workforce, advanced technology and the latest types of machinery make modular rack system rich in quality and stand unique for its customer support with added innovation and time-bound supplies.
- An Experienced workforce with precision engineering capabilities and the best efficient software configuration, our facility includes innovative designs.
- We regularly improvise our production techniques and technologies as per the latest industrial developments.
- Our efficient and dedicated workforce helps us to efficiently cater to the diverse requirements of different industries. Our Team possesses extensive expertise in their domains, which enables us to ensure the possibility of zero errors in our business processes and procedures & provide the best products to the clients that are at par with their expectations.



Figure 1- Laser Cutting



Figure 2- Press Brake



Figure 3- Shearing



Figure 4- Fabrication



Figure 5- Powder Coating



Figure 6- Assembly

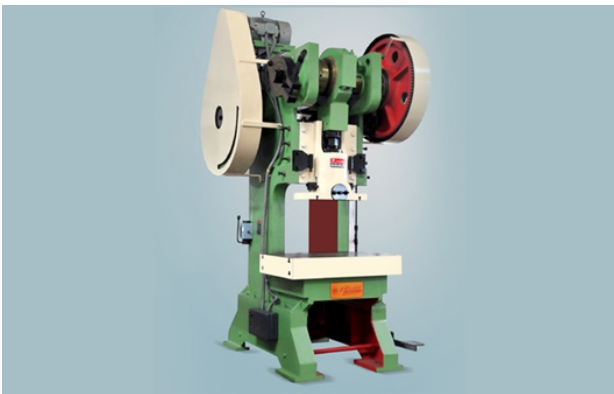


Figure 7- Power Press



Figure 8- Expert Design Team & Consultation

Clients :

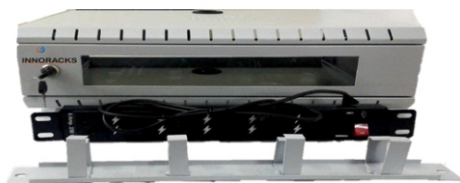
Ipack Solutions has over 50+ trusted clients. Ranging from software development firms, telecommunications companies, and the IT sector at large, our clients have come to expect high quality and durability from all our products.

We believe in a strong relationship building of mutual trust between customer and supplier, thereby improving the reliability of the products. The main motto of our services is to provide customer care which is one of the finest and most satisfying in the business. Moreover, our ethical business practices enable us to maintain a cordial alliance with our clients.

Our Range of Products

Being a quality-centric manufacturer of racking systems for IT & telecom Industries, we have a vast range of products that are serving many industries and segments.

2U Wall Mount Network/DVR Rack



Application	Network Switches/Routers/Firewall/ DVR/NVR/Audio- Visual Equipment/ Low Depth Servers
Material	CRCA Steel Single Wall, Thickness 0.8 mm
Front Door	Glass /Metal Door with Key Lock
Rear door	Not Available due to Wall Mount Provision Rear door available for Floor Stand Rack
Side Panels	Fixed Welded/bolted with Top/Base Frame
Cable Entry Cut	Top/ Bottom
Mounting Channels	2 Pair Heavy Duty (1.2mm) Vertical Mounting Rail
Cooling Option	1-2 fan Provision mounted on Top Panel
Load Bearing Capacity	Up to 25 -30 KG
Construction	Dismantle/Welded Construction Overall 0.8mm Thickness, Load Bearing angles are 0.8 MM
Power Distribution Unit	6 Socket 5AMP & 15AMP Horizontal
Cable Management	Horizontal Metal & PVC
Glass	Toughened Glass 4mm
Fix Shelf/Cantilever Shelf	255mm to 455mm
Color	Light Grey Powder Coated (RAL 7035) and RAL 7032 /Black (as per Requirement)
DIN	19 Inch Maintain
Logistic Packaging	For Domestic Supply: 3 PLY Corrugation Box For Export Supply: 5 PLY Corrugation Box (With Safety Handling Sticker)

Product Part No.	Height in U	Overall Height	Usable Height	Overall Width	Usable Width	Overall Depth	Usable Depth
INN-001 (2U 550x400)	2U	155mm	90 mm	550 mm	482.6mm (19 Inch)	400mm	340 mm
INN-002 (2U 550x500)	2U	155mm	90 mm	550 mm	482.6mm (19 Inch)	500mm	440 mm
INN-003 (2U 550x600)	2U	155mm	90 mm	550 mm	482.6mm (19 Inch)	600mm	540 mm
INN-004 (2U 550x650)	2U	155mm	90 mm	550 mm	482.6mm (19 Inch)	650mm	565 mm

INDOOR RACKS

4U Wall Mount Network/DVR Rack

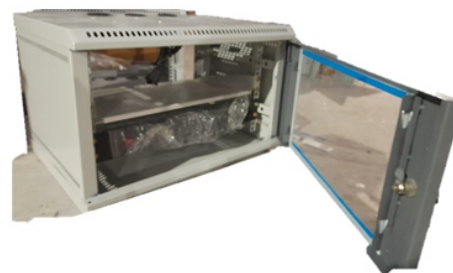
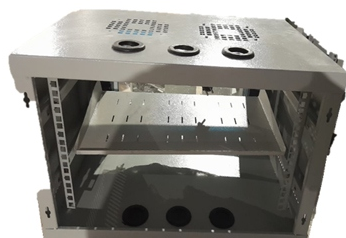


Application	Network Switches/Routers/Firewall/ DVR/NVR/Audio- Visual Equipment/ Low Depth Servers
Material	CRCA Steel Single Wall, Thickness 0.8 mm
Front Door	Glass /Metal Door with Key Lock
Rear door	Not Available due to Wall Mount Provision Rear door available for Floor Stand Rack
Side Panels	Fixed Welded/bolted with Top/Base Frame
Cable Entry Cut	Top/ Bottom
Mounting Channels	2 Pair Heavy Duty (1.2mm) Vertical Mounting Rail
Cooling Option	1-2 fan Provision mounted on Top Panel
Load Bearing Capacity	Up to 25 -30 KG
Construction	Dismantle/Welded Construction Overall 0.8mm Thickness, Load Bearing angles are 0.8 MM
Power Distribution Unit	6 Socket 5AMP & 15AMP Horizontal
Cable Management	Horizontal Metal & PVC
Glass	Toughened Glass 4mm
Fix Shelf/Cantilever Shelf	255mm to 455mm
Color	Light Grey Powder Coated (RAL 7035) and RAL 7032 /Black (as per Requirement)
DIN	19 Inch Maintain
Logistic Packaging	For Domestic Supply: 3 PLY Corrugation Box For Export Supply: 5 PLY Corrugation Box (With Safety Handling Sticker)

Product Part No.	Height in U	Overall Height	Usable Height	Overall Width	Usable Width	Overall Depth	Usable Depth
INN-001 (4U 550x400)	4U	260mm	195 mm	550 mm	482.6mm (19 Inch)	400mm	340 mm
INN-002 (4U 550x500)	4U	260mm	195 mm	550 mm	482.6mm (19 Inch)	500mm	440 mm
INN-003 (4U 550x600)	4U	260mm	195 mm	550 mm	482.6mm (19 Inch)	600mm	540 mm
INN-004 (4U 550x650)	4U	260mm	195 mm	550 mm	482.6mm (19 Inch)	650mm	565 mm

INDOOR RACKS

6U Wall Mount Network/DVR Rack



Application	Network Switches/Routers/Firewall/ DVR/NVR/Audio- Visual Equipment/ Low Depth Servers
Material	CRCA Steel Single Wall, Thickness 0.8 mm
Front Door	Glass /Metal Door with Key Lock
Rear door	Not Available due to Wall Mount Provision Rear door available for Floor Stand Rack
Side Panels	Fixed Welded/bolted with Top/Base Frame
Cable Entry Cut	Top/ Bottom
Mounting Channels	2 Pair Heavy Duty (1.2mm) Vertical Mounting Rail
Cooling Option	1-2 fan Provision mounted on Top Panel
Load Bearing Capacity	Up to 25 -30 KG
Construction	Dismantle/Welded Construction Overall 0.8mm Thickness, Load Bearing angles are 0.8 MM
Power Distribution Unit	6 Socket 5AMP & 15AMP Horizontal
Cable Management	Horizontal Metal & PVC
Glass	Toughened Glass 4mm
Fix Shelf/Cantilever Shelf	255mm to 455mm
Color	Light Grey Powder Coated (RAL 7035) and RAL 7032 /Black (as per Requirement)
DIN	19 Inch Maintain
Logistic Packaging	For Domestic Supply: 3 PLY Corrugation Box For Export Supply: 5 PLY Corrugation Box (With Safety Handling Sticker)

Product Part No.	Height in U	Overall Height	Usable Height	Overall Width	Usable Width	Overall Depth	Usable Depth
INN-001 (6U 550x400)	6U	345mm	280 mm	550 mm	482.6mm (19 Inch)	400mm	340 mm
INN-002 (6U 550x500)	6U	345mm	280 mm	550 mm	482.6mm (19 Inch)	500mm	440 mm
INN-003 (6U 550x600)	6U	345mm	280 mm	550 mm	482.6mm (19 Inch)	600mm	540 mm
INN-004 (6U 550x650)	6U	345mm	280 mm	550 mm	482.6mm (19 Inch)	650mm	565 mm

INDOOR RACKS

9U Wall Mount Network/DVR Rack

Application	Network Switches/Routers/Firewall/ DVR/NVR/Audio- Visual Equipment/ Low Depth Servers
Material	CRCA Steel Single Wall, Thickness 0.8 mm
Front Door	Glass /Metal Door with Key Lock
Rear door	Not Available due to Wall Mount Provision Rear door available for Floor Stand Rack
Side Panels	Fixed Welded/bolted with Top/Base Frame
Cable Entry Cut	Top/ Bottom
Mounting Channels	2 Pair Heavy Duty (1.2mm) Vertical Mounting Rail
Cooling Option	1-2 fan Provision mounted on Top Panel
Load Bearing Capacity	Up to 25 -30 KG
Construction	Dismantle/Welded Construction Overall 0.8mm Thickness, Load Bearing angles are 0.8 MM
Power Distribution Unit	6 Socket 5AMP & 15AMP Horizontal
Cable Management	Horizontal Metal & PVC
Glass	Toughened Glass 4mm
Fix Shelf/Cantilever Shelf	255mm to 455mm
Color	Light Grey Powder Coated (RAL 7035) and RAL 7032 /Black (as per Requirement)
DIN	19 Inch Maintain
Logistic Packaging	For Domestic Supply: 3 PLY Corrugation Box For Export Supply: 5 PLY Corrugation Box (With Safety Handling Sticker)

Product Part No.	Height in U	Overall Height	Usable Height	Overall Width	Usable Width	Overall Depth	Usable Depth
INN-001 (9U 550x400)	9U	477mm	412 mm	550 mm	482.6mm (19 Inch)	400mm	340 mm
INN-002 (9U 550x500)	9U	477mm	412 mm	550 mm	482.6mm (19 Inch)	500mm	440 mm
INN-003 (9U 550x600)	9U	477mm	412 mm	550 mm	482.6mm (19 Inch)	600mm	540 mm
INN-004 (9U 550x650)	9U	477mm	412 mm	550 mm	482.6mm (19 Inch)	650mm	565 mm

INDOOR RACKS

12U Wall Mount Network/DVR Rack

Application	Network Switches/Routers/Firewall/ DVR/NVR/Audio- Visual Equipment/ Low Depth Servers
Material	CRCA Steel Single Wall, Thickness 0.8 mm
Front Door	Glass /Metal Door with Key Lock
Rear door	Not Available due to Wall Mount Provision Rear door available for Floor Stand Rack
Side Panels	Fixed Welded/bolted with Top/Base Frame
Cable Entry Cut	Top/ Bottom
Mounting Channels	2 Pair Heavy Duty (1.2mm) Vertical Mounting Rail
Cooling Option	1-2 fan Provision mounted on Top Panel
Load Bearing Capacity	Up to 25 -30 KG
Construction	Dismantle/Welded Construction Overall 0.8mm Thickness, Load Bearing angles are 0.8 MM
Power Distribution Unit	6 Socket 5AMP & 15AMP Horizontal
Cable Management	Horizontal Metal & PVC
Glass	Toughened Glass 4mm
Fix Shelf/Cantilever Shelf	255mm to 455mm
Color	Light Grey Powder Coated (RAL 7035) and RAL 7032 /Black (as per Requirement)
DIN	19 Inch Maintain
Logistic Packaging	For Domestic Supply: 3 PLY Corrugation Box For Export Supply: 5 PLY Corrugation Box (With Safety Handling Sticker)

Product Part No.	Height in U	Overall Height	Usable Height	Overall Width	Usable Width	Overall Depth	Usable Depth
INN-001 (12U 550x400)	12U	600mm	535mm	550 mm	482.6mm (19 Inch)	400mm	340 mm
INN-002 (12U 550x500)	12U	600mm	535mm	550 mm	482.6mm (19 Inch)	500mm	440 mm
INN-003 (12U 550x600)	12U	600mm	535mm	550 mm	482.6mm (19 Inch)	600mm	540 mm
INN-004 (12U 550x650)	12U	600mm	535mm	550 mm	482.6mm (19 Inch)	650mm	565 mm

INDOOR RACKS

15U Wall Mount Network/DVR Rack

Application	Network Switches/Routers/Firewall/ DVR/NVR/Audio- Visual Equipment/ Low Depth Servers
Material	CRCA Steel Single Wall, Thickness 0.8 mm
Front Door	Glass /Metal Door with Key Lock
Rear door	Not Available due to Wall Mount Provision Rear door available for Floor Stand Rack
Side Panels	Fixed Welded/bolted with Top/Base Frame
Cable Entry Cut	Top/ Bottom
Mounting Channels	2 Pair Heavy Duty (1.2mm) Vertical Mounting Rail
Cooling Option	1-2 fan Provision mounted on Top Panel
Load Bearing Capacity	Up to 25 -30 KG
Construction	Dismantle/Welded Construction Overall 0.8mm Thickness, Load Bearing angles are 0.8 MM
Power Distribution Unit	6 Socket 5AMP & 15AMP Horizontal
Cable Management	Horizontal Metal & PVC
Glass	Toughened Glass 4mm
Fix Shelf/Cantilever Shelf	255mm to 455mm
Color	Light Grey Powder Coated (RAL 7035) and RAL 7032 /Black (as per Requirement)
DIN	19 Inch Maintain
Logistic Packaging	For Domestic Supply: 3 PLY Corrugation Box For Export Supply: 5 PLY Corrugation Box (With Safety Handling Sticker)

Product Part No.	Height in U	Overall Height	Usable Height	Overall Width	Usable Width	Overall Depth	Usable Depth
INN-001 (15U 550x400)	15U	735mm	670mm	550 mm	482.6mm (19 Inch)	400mm	340 mm
INN-002 (15U 550x500)	15U	735mm	670mm	550 mm	482.6mm (19 Inch)	500mm	440 mm
INN-003 (15U 550x600)	15U	735mm	670mm	550 mm	482.6mm (19 Inch)	600mm	540 mm
INN-004 (15U 550x650)	15U	735mm	670mm	550 mm	482.6mm (19 Inch)	650mm	565 mm

INDOOR RACKS

17U Wall Mount Network/DVR Rack

Application	Network Switches/Routers/Firewall/ DVR/NVR/Audio- Visual Equipment/ Broadcasting Equipment Servers
Material	CRCA Steel Single Wall, Thickness 0.8 mm
Front Door	Glass Door OR Full Perforated Door with Lock
Rear door	Half Perforated & full Perforation Steel Door with Lock
Side Panels	Removable with Slam Latch and Lockable Provision
Cable Entry Cut	Top/ Bottom
Mounting Channels	2 Pair Heavy Duty (2.0mm) Vertical Mounting Rail Channel Fitted on Front & Rear Pillar 4 Pair Heavy Duty (2.0mm) Depth Support Channel Fitted on Front & Rear Pillar
Cooling Option	4 fan Provision mounted on Top Panel
Load Bearing Capacity	Up to 600-1000 KG
Construction	Dismantle Construction Overall 1.2mm Thickness (18gauge), Load Bearing angles are 2 MM
Power Distribution Unit	Horizontal/Vertical (Optional)
Cable Management	Horizontal/Vertical
Glass	Toughened Glass 4mm
Fix Shelf/Cantilever Shelf	Optional
Color	Light Grey Powder Coated (RAL 7035) and RAL 7032 /Black (as per Requirement)
DIN	19 Inch Maintain
Logistic Packaging	For Domestic Supply: 3 PLY Corrugation Box For Export Supply: 5 PLY Corrugation Box (With Safety Handling Sticker)

Product Part No.	Height in U	Overall Height	Usable Height	Overall Width	Usable Width	Overall Depth	Usable Depth
INN-001 (17U 600X600)	17U	955mm	765mm	600mm	482.6mm (19 Inch)	600mm	480 mm
INN-002 (17U 600X800)	17U	955mm	765mm	600mm	482.6mm (19 Inch)	800mm	680 mm
INN-003 (17U 600x1000)	17U	955mm	765mm	600mm	482.6mm (19 Inch)	1000mm	880 mm
INN-004 (17U 800x800)	17U	955mm	765mm	800mm	482.6mm (19 Inch)	800mm	680 mm
INN-005 (17U 800x1000)	17U	955mm	765mm	800mm	482.6mm (19 Inch)	1000mm	880 mm
INN-006 (17U 600x1200)	17U	955mm	765mm	600mm	482.6mm (19 Inch)	1200mm	1080 mm
INN-007 (17U 800x1200)	17U	955mm	765mm	800mm	482.6mm (19 Inch)	1200mm	1080 mm

INDOOR RACKS

18U Floor Standing Network/DVR Rack



Application	Network Switches/Routers/Firewall/ DVR/NVR/Audio- Visual Equipment/ Broadcasting Equipment Servers
Material	CRCA Steel Single Wall, Thickness 0.8 mm
Front Door	Glass Door OR Full Perforated Door with Lock
Rear door	Half Perforated & full Perforation Steel Door with Lock
Side Panels	Removable with Slam Latch and Lockable Provision
Cable Entry Cut	Top/ Bottom
Mounting Channels	2 Pair Heavy Duty (2.0mm) Vertical Mounting Rail Channel Fitted on Front & Rear Pillar 4 Pair Heavy Duty (2.0mm) Depth Support Channel Fitted on Front & Rear Pillar
Cooling Option	4 fan Provision mounted on Top Panel
Load Bearing Capacity	Up to 600-1000 KG
Construction	Dismantle Construction Overall 1.2mm Thickness (18gauge), Load Bearing angles are 2 MM
Power Distribution Unit	Horizontal/Vertical (Optional)
Cable Management	Horizontal/Vertical
Glass	Toughened Glass 4mm
Fix Shelf/Cantilever Shelf	Optional
Color	Light Grey Powder Coated (RAL 7035) and RAL 7032 /Black (as per Requirement)
DIN	19 Inch Maintain
Logistic Packaging	For Domestic Supply: 3 PLY Corrugation Box For Export Supply: 5 PLY Corrugation Box (With Safety Handling Sticker)

INDOOR RACKS

Product Part No.	Height in U	Overall Height	Usable Height	Overall Width	Usable Width	Overall Depth	Usable Depth
INN-001 (18U 600X600)	18U	955mm	810mm	600mm	482.6mm (19 Inch)	600mm	480 mm
INN-002 (18U 600X800)	18U	955mm	810mm	600mm	482.6mm (19 Inch)	800mm	680 mm
INN-003 (18U 600x1000)	18U	955mm	810mm	600mm	482.6mm (19 Inch)	1000mm	880 mm
INN-004 (18U 800x800)	18U	955mm	810mm	800mm	482.6mm (19 Inch)	800mm	680 mm
INN-005 (18U 800x1000)	18U	955mm	810mm	800mm	482.6mm (19 Inch)	1000mm	880 mm
INN-006 (18U 600x1200)	18U	955mm	810mm	600mm	482.6mm (19 Inch)	1200mm	1080 mm
INN-007 (18U 800x1200)	18U	955mm	810mm	800mm	482.6mm (19 Inch)	1200mm	1080 mm

22U Floor Standing Server Rack

Application	Network Switches/Routers/Firewall/ DVR/NVR/Audio- Visual Equipment/ Broadcasting Equipment Servers
Material	CRCA Steel Single Wall, Thickness 0.8 mm
Front Door	Glass Door OR Full Perforated Door with Lock
Rear door	Half Perforated & full Perforation Steel Door with Lock
Side Panels	Removable with Slam Latch and Lockable Provision
Cable Entry Cut	Top/ Bottom
Mounting Channels	2 Pair Heavy Duty (2.0mm) Vertical Mounting Rail Channel Fitted on Front & Rear Pillar 4 Pair Heavy Duty (2.0mm) Depth Support Channel Fitted on Front & Rear Pillar
Cooling Option	4 fan Provision mounted on Top Panel
Load Bearing Capacity	Up to 600-1000 KG
Construction	Dismantle Construction Overall 1.2mm Thickness (18gauge), Load Bearing angles are 2 MM
Power Distribution Unit	Horizontal/Vertical (Optional)
Cable Management	Horizontal/Vertical
Glass	Toughened Glass 4mm
Fix Shelf/Cantilever Shelf	Optional
Color	Light Grey Powder Coated (RAL 7035) and RAL 7032 /Black (as per Requirement)
DIN	19 Inch Maintain
Logistic Packaging	For Domestic Supply: 3 PLY Corrugation Box For Export Supply: 5 PLY Corrugation Box (With Safety Handling Sticker)

INDOOR RACKS



Product Part No.	Height in U	Overall Height	Usable Height	Overall Width	Usable Width	Overall Depth	Usable Depth
INN-001 (22U 600X600)	22U	1185mm	955mm	600mm	482.6mm (19 Inch)	600mm	480 mm
INN-002 (22U 600X800)	22U	1185mm	955mm	600mm	482.6mm (19 Inch)	800mm	680 mm
INN-003 (22U 600x1000)	22U	1185mm	955mm	600mm	482.6mm (19 Inch)	1000mm	880 mm
INN-004 (22U 800x800)	22U	1185mm	955mm	800mm	482.6mm (19 Inch)	800mm	680 mm
INN-005 (22U 800x1000)	22U	1185mm	955mm	800mm	482.6mm (19 Inch)	1000mm	880 mm
INN-006 (22U 600x1200)	22U	1185mm	955mm	600mm	482.6mm (19 Inch)	1200mm	1080 mm
INN-007 (22U 800x1200)	22U	1185mm	955mm	800mm	482.6mm (19 Inch)	1200mm	1080 mm

INDOOR RACKS

24U Floor Standing Server Rack

Application	Network Switches/Routers/Firewall/ DVR/NVR/Audio- Visual Equipment/ Broadcasting Equipment Servers
Material	CRCA Steel Single Wall, Thickness 0.8 mm
Front Door	Glass Door OR Full Perforated Door with Lock
Rear door	Half Perforated & full Perforation Steel Door with Lock
Side Panels	Removable with Slam Latch and Lockable Provision
Cable Entry Cut	Top/ Bottom
Mounting Channels	2 Pair Heavy Duty (2.0mm) Vertical Mounting Rail Channel Fitted on Front & Rear Pillar 4 Pair Heavy Duty (2.0mm) Depth Support Channel Fitted on Front & Rear Pillar
Cooling Option	4 fan Provision mounted on Top Panel
Load Bearing Capacity	Up to 600-1000 KG
Construction	Dismantle Construction Overall 1.2mm Thickness (18gauge), Load Bearing angles are 2 MM
Power Distribution Unit	Horizontal/Vertical (Optional)
Cable Management	Horizontal/Vertical
Glass	Toughened Glass 4mm
Fix Shelf/Cantilever Shelf	Optional
Color	Light Grey Powder Coated (RAL 7035) and RAL 7032 /Black (as per Requirement)
DIN	19 Inch Maintain
Logistic Packaging	For Domestic Supply: 3 PLY Corrugation Box For Export Supply: 5 PLY Corrugation Box (With Safety Handling Sticker)

Product Part No.	Height in U	Overall Height	Usable Height	Overall Width	Usable Width	Overall Depth	Usable Depth
INN-001 (24U 600X600)	24U	1260mm	1080mm	600mm	482.6mm (19 Inch)	600mm	480 mm
INN-002 (24U 600X800)	24U	1260mm	1080mm	600mm	482.6mm (19 Inch)	800mm	680 mm
INN-003 (24U 600x1000)	24U	1260mm	1080mm	600mm	482.6mm (19 Inch)	1000mm	880 mm
INN-004 (24U 800x800)	24U	1260mm	1080mm	800mm	482.6mm (19 Inch)	800mm	680 mm
INN-005 (24U 800x1000)	24U	1260mm	1080mm	800mm	482.6mm (19 Inch)	1000mm	880 mm
INN-006 (24U 600x1200)	24U	1260mm	1080mm	600mm	482.6mm (19 Inch)	1200mm	1080 mm
INN-007 (24U 800x1200)	24U	1260mm	1080mm	800mm	482.6mm (19 Inch)	1200mm	1080 mm

INDOOR RACKS

27U Floor Standing Server Rack

Application	Network Switches/Routers/Firewall/ DVR/NVR/Audio- Visual Equipment/ Broadcasting Equipment Servers
Material	CRCA Steel Single Wall, Thickness 0.8 mm
Front Door	Glass Door OR Full Perforated Door with Lock
Rear door	Half Perforated & full Perforation Steel Door with Lock
Side Panels	Removable with Slam Latch and Lockable Provision
Cable Entry Cut	Top/ Bottom
Mounting Channels	2 Pair Heavy Duty (2.0mm) Vertical Mounting Rail Channel Fitted on Front & Rear Pillar 4 Pair Heavy Duty (2.0mm) Depth Support Channel Fitted on Front & Rear Pillar
Cooling Option	4 fan Provision mounted on Top Panel
Load Bearing Capacity	Up to 600-1000 KG
Construction	Dismantle Construction Overall 1.2mm Thickness (18gauge), Load Bearing angles are 2 MM
Power Distribution Unit	Horizontal/Vertical (Optional)
Cable Management	Horizontal/Vertical
Glass	Toughened Glass 4mm
Fix Shelf/Cantilever Shelf	Optional
Color	Light Grey Powder Coated (RAL 7035) and RAL 7032 /Black (as per Requirement)
DIN	19 Inch Maintain
Logistic Packaging	For Domestic Supply: 3 PLY Corrugation Box For Export Supply: 5 PLY Corrugation Box (With Safety Handling Sticker)

Product Part No.	Height in U	Overall Height	Usable Height	Overall Width	Usable Width	Overall Depth	Usable Depth
INN-001 (27U 600X600)	27U	1405mm	1215mm	600mm	482.6mm (19 Inch)	600mm	480 mm
INN-002 (27U 600X800)	27U	1405mm	1215mm	600mm	482.6mm (19 Inch)	800mm	680 mm
INN-003 (27U 600x1000)	27U	1405mm	1215mm	600mm	482.6mm (19 Inch)	1000mm	880 mm
INN-004 (27U 800x800)	27U	1405mm	1215mm	800mm	482.6mm (19 Inch)	800mm	680 mm
INN-005 (27U 800x1000)	27U	1405mm	1215mm	800mm	482.6mm (19 Inch)	1000mm	880 mm
INN-006 (27U 600x1200)	27U	1405mm	1215mm	600mm	482.6mm (19 Inch)	1200mm	1080 mm
INN-007 (27U 800x1200)	27U	1405mm	1215mm	800mm	482.6mm (19 Inch)	1200mm	1080 mm

INDOOR RACKS

32U Floor Standing Server Rack

Application	Network Switches/Routers/Firewall/ DVR/NVR/Audio- Visual Equipment/ Broadcasting Equipment Servers
Material	CRCA Steel Single Wall, Thickness 0.8 mm
Front Door	Glass Door OR Full Perforated Door with Lock
Rear door	Half Perforated & full Perforation Steel Door with Lock
Side Panels	Removable with Slam Latch and Lockable Provision
Cable Entry Cut	Top/ Bottom
Mounting Channels	2 Pair Heavy Duty (2.0mm) Vertical Mounting Rail Channel Fitted on Front & Rear Pillar 4 Pair Heavy Duty (2.0mm) Depth Support Channel Fitted on Front & Rear Pillar
Cooling Option	4 fan Provision mounted on Top Panel
Load Bearing Capacity	Up to 600-1000 KG
Construction	Dismantle Construction Overall 1.2mm Thickness (18gauge), Load Bearing angles are 2 MM
Power Distribution Unit	Horizontal/Vertical (Optional)
Cable Management	Horizontal/Vertical
Glass	Toughened Glass 4mm
Fix Shelf/Cantilever Shelf	Optional
Color	Light Grey Powder Coated (RAL 7035) and RAL 7032 /Black (as per Requirement)
DIN	19 Inch Maintain
Logistic Packaging	For Domestic Supply: 3 PLY Corrugation Box For Export Supply: 5 PLY Corrugation Box (With Safety Handling Sticker)

Product Part No.	Height in U	Overall Height	Usable Height	Overall Width	Usable Width	Overall Depth	Usable Depth
INN-001 (32U 600X600)	32U	1650mm	1440mm	550mm	482.6mm (19 Inch)	600mm	480 mm
INN-002 (32U 600X800)	32U	1650mm	1440mm	550mm	482.6mm (19 Inch)	800mm	680 mm
INN-003 (32U 600x1000)	32U	1650mm	1440mm	550mm	482.6mm (19 Inch)	1000mm	880 mm
INN-004 (32U 800x800)	32U	1650mm	1440mm	550mm	482.6mm (19 Inch)	800mm	680 mm
INN-005 (32U 800x1000)	32U	1650mm	1440mm	550mm	482.6mm (19 Inch)	1000mm	880 mm
INN-006 (32U 600x1200)	32U	1650mm	1440mm	550mm	482.6mm (19 Inch)	1200mm	1080 mm
INN-007 (32U 800x1200)	32U	1650mm	1440mm	550mm	482.6mm (19 Inch)	1200mm	1080 mm

INDOOR RACKS

36U Floor Standing Server Rack

Application	Network Switches/Routers/Firewall/ DVR/NVR/Audio- Visual Equipment/ Broadcasting Equipment Servers
Material	CRCA Steel Single Wall, Thickness 0.8 mm
Front Door	Glass Door OR Full Perforated Door with Lock
Rear door	Half Perforated & full Perforation Steel Door with Lock
Side Panels	Removable with Slam Latch and Lockable Provision
Cable Entry Cut	Top/ Bottom
Mounting Channels	2 Pair Heavy Duty (2.0mm) Vertical Mounting Rail Channel Fitted on Front & Rear Pillar 4 Pair Heavy Duty (2.0mm) Depth Support Channel Fitted on Front & Rear Pillar
Cooling Option	4 fan Provision mounted on Top Panel
Load Bearing Capacity	Up to 600-1000 KG
Construction	Dismantle Construction Overall 1.2mm Thickness (18gauge), Load Bearing angles are 2 MM
Power Distribution Unit	Horizontal/Vertical (Optional)
Cable Management	Horizontal/Vertical
Glass	Toughened Glass 4mm
Fix Shelf/Cantilever Shelf	Optional
Color	Light Grey Powder Coated (RAL 7035) and RAL 7032 /Black (as per Requirement)
DIN	19 Inch Maintain
Logistic Packaging	For Domestic Supply: 3 PLY Corrugation Box For Export Supply: 5 PLY Corrugation Box (With Safety Handling Sticker)



INDOOR RACKS

Product Part No.	Height in U	Overall Height	Usable Height	Overall Width	Usable Width	Overall Depth	Usable Depth
INN-001 (36U 600X600)	36U	1807mm	1605mm	600mm	482.6mm (19 Inch)	600mm	480 mm
INN-002 (36U 600X800)	36U	1807mm	1605mm	600mm	482.6mm (19 Inch)	800mm	680 mm
INN-003 (36U 600x1000)	36U	1807mm	1605mm	600mm	482.6mm (19 Inch)	1000mm	880 mm
INN-004 (36U 800x800)	36U	1807mm	1605mm	600mm	482.6mm (19 Inch)	800mm	680 mm
INN-005 (36U 800x1000)	36U	1807mm	1605mm	550mm	482.6mm (19 Inch)	1000mm	880 mm
INN-006 (36U 600x1200)	36U	1807mm	1605mm	550mm	482.6mm (19 Inch)	1200mm	1080 mm
INN-007 (36U 800x1200)	36U	1807mm	1605mm	550mm	482.6mm (19 Inch)	1200mm	1080 mm

42U Floor Standing Server Rack

Application	Network Switches/Routers/Firewall/ DVR/NVR/Audio- Visual Equipment/ Broadcasting Equipment Servers
Material	CRCA Steel Single Wall, Thickness 0.8 mm
Front Door	Glass Door OR Full Perforated Door with Lock
Rear door	Half Perforated & full Perforation Steel Door with Lock
Side Panels	Removable with Slam Latch and Lockable Provision
Cable Entry Cut	Top/ Bottom
Mounting Channels	2 Pair Heavy Duty (2.0mm) Vertical Mounting Rail Channel Fitted on Front & Rear Pillar 4 Pair Heavy Duty (2.0mm) Depth Support Channel Fitted on Front & Rear Pillar
Cooling Option	4 fan Provision mounted on Top Panel
Load Bearing Capacity	Up to 600-1000 KG
Construction	Dismantle Construction Overall 1.2mm Thickness (18gauge), Load Bearing angles are 2 MM
Power Distribution Unit	Horizontal/Vertical (Optional)
Cable Management	Horizontal/Vertical
Glass	Toughened Glass 4mm
Fix Shelf/Cantilever Shelf	Optional
Color	Light Grey Powder Coated (RAL 7035) and RAL 7032 /Black (as per Requirement)
DIN	19 Inch Maintain
Logistic Packaging	For Domestic Supply: 3 PLY Corrugation Box For Export Supply: 5 PLY Corrugation Box (With Safety Handling Sticker)

INDOOR RACKS



Product Part No.	Height in U	Overall Height	Usable Height	Overall Width	Usable Width	Overall Depth	Usable Depth
INN-001 (42U 600X600)	42U	2098mm	1885mm	600mm	482.6mm (19 Inch)	600mm	480 mm
INN-002 (42U 600X800)	42U	2098mm	1885mm	600mm	482.6mm (19 Inch)	800mm	680 mm
INN-003 (42U 600x1000)	42U	2098mm	1885mm	600mm	482.6mm (19 Inch)	1000mm	880 mm
INN-004 (42U 800x800)	42U	2098mm	1885mm	600mm	482.6mm (19 Inch)	800mm	680 mm
INN-005 (42U 800x1000)	42U	2098mm	1885mm	600mm	482.6mm (19 Inch)	1000mm	880 mm
INN-006 (42U 600x1200)	42U	2098mm	1885mm	600mm	482.6mm (19 Inch)	1200mm	1080 mm
INN-007 (42U 800x1200)	42U	2098mm	1885mm	600mm	482.6mm (19 Inch)	1200mm	1080 mm

OUTDOOR RACKS

6U Wall Mount Pole Mount IP55 Outdoor Cabinet



Application	Network Switches/ Telecom, Wi-Fi, Surveillance, Network & Surveillance, Fiber Management , Solar Projects
Forte	Smart City Projects Safe City Surveillance Projects City Wi-Fi Projects Solar Fiber Projects
Material	CRCA Steel Single Wall, Thickness 0.8 mm * Galvanized Steel &Stainless Options are available On Requirement)
Front Door	Lockable steel door with gasket sealing
Canopy	Integrated Canopy on top, coverage from front door side
Cable Entry Cut	Top/ Bottom
Mounting Channels	2 Pair Heavy Duty (1.2mm) Vertical Mounting Rail for equipment mounting; *Height as per Rack Unit. Fully adjustable 19” mounting Channels, mounting rails can be adjusted as per requirement
Cooling Option	2 Fan option for hot air execution *Extra hood on Door Fan Cooled Cabinet through Dual Fan Option (Pelletier cooling is optional)
Load Bearing Capacity	Up to 35 -40 KG *(Customized Cabinet with load bearing capacity of 100kg)
Construction	Welded Galvanized Plain Steel Construction 1.2 mm Thick Load Bearing angles are 1.5 mm
Power Distribution Unit	6 Socket 5AMP Indian round pin amp (15AMP Socket, Universal Socket, IEC Socket With MCB is Optional)
Cable Management	Horizontal PVC (Optional)
Glass	Toughened Glass 4mm
Fix Shelf/Cantilever Shelf	255mm to 455mm
Color	Light Grey Powder Coated (RAL 7035) and RAL 7032 /Black (as per Requirement)
DIN	19 Inch Maintain
Locking Arrangement	Dual (Cam Lock & Pad lock on door)
Pole Mount Kit	Thickness- 2.5mm -3.0mm *Pole Mount Bracket with Thickness 20mm X 200mm Long Bolt Structure
Logistic Packaging	For Domestic Supply: 3 PLY Corrugation Box For Export Supply: 5 PLY Corrugation Box (With Safety Handling Sticker)
Protection Rating	Rating IP55 Compliance Structure Protection from low pressure jet, rain Water or any other Natural reason, & level of harmful dust
Cable Entry	Through IP Rating PG Cable entry Glands - Options *PG 7,PG 9,PG 11, PG 16, PG 19, PG 25, PG 29, PG 36
Available Depth(s)	Available in Multiple Depth like 200mm 300mm 400mm 500mm 600mm (400mm is standard)

OUTDOOR RACKS

Product Part No.	Height in U	Overall Height	Usable Height	Overall Width	Usable Width	Overall Depth	Usable Depth
INN-6U O/D 300MMD	6U	350mm	275mm	550mm	482.6mm (19 Inch)	300mm	260 mm
INN-6U O/D 400MMD	6U	350mm	275mm	550mm	482.6mm (19 Inch)	400mm	340 mm
INN-6U O/D 500MMD	6U	350mm	275mm	550mm	482.6mm (19 Inch)	500mm	440 mm
INN-6U O/D 600MMD	6U	350mm	275mm	550mm	482.6mm (19 Inch)	600mm	540 mm
INN-6U O/D 650MMD	6U	350mm	275mm	550mm	482.6mm (19 Inch)	650mm	565 mm

9U Wall Mount Pole Mount IP55 Outdoor Cabinet

Application	Network Switches/ Telecom, Wi-Fi, Surveillance, Network & Surveillance, Fiber Management , Solar Projects
Forte	Smart City Projects Safe City Surveillance Projects City Wi-Fi Projects Solar Fiber Projects
Material	CRCA Steel Single Wall, Thickness 0.8 mm * Galvanized Steel &Stainless Options are available On Requirement)
Front Door	Lockable steel door with gasket sealing
Canopy	Integrated Canopy on top, coverage from front door side
Cable Entry Cut	Top/ Bottom
Mounting Channels	2 Pair Heavy Duty (1.5mm) Vertical Mounting Rail for equipment mounting; *Height as per Rack Unit. Fully adjustable 19" mounting Channels, mounting rails can be adjusted as per requirement
Cooling Option	2 Fan option for hot air execution *Extra hood on Door Fan Cooled Cabinet through Dual Fan Option (Pelletier cooling is optional)
Load Bearing Capacity	Up to 35 -40 KG *(Customized Cabinet with load bearing capacity of 100kg)
Construction	Welded Galvanized Plain Steel Construction 1.2 mm Thick Load Bearing angles are 1.5 mm
Power Distribution Unit	6 Socket 5AMP Indian round pin amp (15AMP Socket, Universal Socket, IEC Socket With MCB is Optional)
Cable Management	Horizontal PVC (Optional)
Glass	Toughened Glass 4mm
Fix Shelf/Cantilever Shelf	255mm to 455mm
Color	Light Grey Powder Coated (RAL 7035) and RAL 7032 /Black (as per Requirement)
DIN	19 Inch Maintain
Locking Arrangement	Dual (Cam Lock & Pad lock on door)
Pole Mount Kit	Thickness- 2.5mm -3.0mm *Pole Mount Bracket with Thickness 20mm X 200mm Long Bolt Structure
Logistic Packaging	For Domestic Supply: 3 PLY Corrugation Box For Export Supply: 5 PLY Corrugation Box (With Safety Handling Sticker)

OUTDOOR RACKS

Protection Rating	Rating IP55 Compliance Structure Protection from low pressure jet, rain Water or any other Natural reason, & level of harmful dust
Cable Entry	Through IP Rating PG Cable entry Glands - Options *PG 7,PG 9,PG 11, PG 16, PG 19, PG 25, PG 29, PG 36
Available Depth(s)	Available in Multiple Depth like 200mm 300mm 400mm 500mm 600mm (400mm is standard)

Product Part No.	Height in U	Overall Height	Usable Height	Overall Width	Usable Width	Overall Depth	Usable Depth
INN-9U O/D 300MMD	9U	485mm	402mm	550mm	482.6mm (19 Inch)	300mm	260 mm
INN-9U O/D 400MMD	9U	485mm	402mm	550mm	482.6mm (19 Inch)	400mm	340 mm
INN-9U O/D 500MMD	9U	485mm	402mm	550mm	482.6mm (19 Inch)	500mm	440 mm
INN-9U O/D 600MMD	9U	485mm	402mm	550mm	482.6mm (19 Inch)	600mm	540 mm
INN-9U O/D 650MMD	9U	485mm	402mm	550mm	482.6mm (19 Inch)	650mm	565 mm

12U Wall Mount Pole Mount IP55 Outdoor Cabinet

Application	Network Switches/ Telecom, Wi-Fi, Surveillance, Network & Surveillance, Fiber Management , Solar Projects
Forte	Smart City Projects Safe City Surveillance Projects City Wi-Fi Projects Solar Fiber Projects
Material	CRCA Steel Single Wall, Thickness 0.8 mm * Galvanized Steel &Stainless Options are available On Requirement)
Front Door	Lockable steel door with gasket sealing
Canopy	Integrated Canopy on top, coverage from front door side
Cable Entry Cut	Top/ Bottom
Mounting Channels	2 Pair Heavy Duty (1.5mm) Vertical Mounting Rail for equipment mounting; *Height as per Rack Unit. Fully adjustable 19" mounting Channels, mounting rails can be adjusted as per requirement
Cooling Option	2 Fan option for hot air execution *Extra hood on Door Fan Cooled Cabinet through Dual Fan Option (Pelletier cooling is optional)
Load Bearing Capacity	Up to 35 -40 KG *(Customized Cabinet with load bearing capacity of 100kg)
Construction	Welded Galvanized Plain Steel Construction 1.2 mm Thick Load Bearing angles are 1.5 mm
Power Distribution Unit	6 Socket 5AMP Indian round pin amp (15AMP Socket, Universal Socket, IEC Socket With MCB is Optional)
Cable Management	Horizontal PVC (Optional)
Glass	Toughened Glass 4mm
Fix Shelf/Cantilever Shelf	255mm to 455mm
Color	Light Grey Powder Coated (RAL 7035) and RAL 7032 /Black (as per Requirement)
DIN	19 Inch Maintain

OUTDOOR RACKS

Locking Arrangement	Dual (Cam Lock & Pad lock on door)
Pole Mount Kit	Thickness- 2.5mm -3.0mm *Pole Mount Bracket with Thickness 20mm X 200mm Long Bolt Structure
Logistic Packaging	For Domestic Supply: 3 PLY Corrugation Box For Export Supply: 5 PLY Corrugation Box (With Safety Handling Sticker)
Protection Rating	Rating IP55 Compliance Structure Protection from low pressure jet, rain Water or any other Natural reason, & level of harmful dust
Cable Entry	Through IP Rating PG Cable entry Glands - Options *PG 7,PG 9,PG 11, PG 16, PG 19, PG 25, PG 29, PG 36
Available Depth(s)	Available in Multiple Depth like 200mm 300mm 400mm 500mm 600mm (400mm is standard)

Product Part No.	Height in U	Overall Height	Usable Height	Overall Width	Usable Width	Overall Depth	Usable Depth
INN-12U O/D 300MMD	12U	640mm	535mm	550mm	482.6mm	300mm	260 mm
					(19 Inch)		
INN-12U O/D 400MMD	12U	640mm	535mm	550mm	482.6mm	400mm	340 mm
					(19 Inch)		
INN-12U O/D 500MMD	12U	640mm	535mm	550mm	482.6mm	500mm	440 mm
					(19 Inch)		
INN-12U O/D 600MMD	12U	640mm	535mm	550mm	482.6mm	600mm	540 mm
					(19 Inch)		
INN-12U O/D 650MMD	12U	640mm	535mm	550mm	482.6mm	650mm	565 mm
					(19 Inch)		

OUTDOOR RACKS

15U Wall Mount Pole Mount IP55 Outdoor Cabinet

Application	Network Switches/ Telecom, Wi-Fi, Surveillance, Network & Surveillance, Fiber Management , Solar Projects
Forte	Smart City Projects Safe City Surveillance Projects City Wi-Fi Projects Solar Fiber Projects
Material	CRCA Steel Single Wall, Thickness 0.8 mm * Galvanized Steel &Stainless Options are available On Requirement)
Front Door	Lockable steel door with gasket sealing
Canopy	Integrated Canopy on top, coverage from front door side
Cable Entry Cut	Top/ Bottom
Mounting Channels	2 Pair Heavy Duty (1.5mm) Vertical Mounting Rail for equipment mounting; *Height as per Rack Unit. Fully adjustable 19" mounting Channels, mounting rails can be adjusted as per requirement
Cooling Option	2 Fan option for hot air execution *Extra hood on Door Fan Cooled Cabinet through Dual Fan Option (Pelletier cooling is optional)
Load Bearing Capacity	Up to 35 -40 KG *(Customized Cabinet with load bearing capacity of 100kg)
Construction	Welded Galvanized Plain Steel Construction 1.2 mm Thick Load Bearing angles are 1.5 mm
Power Distribution Unit	6 Socket 5AMP Indian round pin amp (15AMP Socket, Universal Socket, IEC Socket With MCB is Optional)
Cable Management	Horizontal PVC (Optional)
Glass	Toughened Glass 4mm
Fix Shelf/Cantilever Shelf	255mm to 455mm
Color	Light Grey Powder Coated (RAL 7035) and RAL 7032 /Black (as per Requirement)
DIN	19 Inch Maintain
Locking Arrangement	Dual (Cam Lock & Pad lock on door)
Pole Mount Kit	Thickness- 2.5mm -3.0mm *Pole Mount Bracket with Thickness 20mm X 200mm Long Bolt Structure
Logistic Packaging	For Domestic Supply: 3 PLY Corrugation Box For Export Supply: 5 PLY Corrugation Box (With Safety Handling Sticker)
Protection Rating	Rating IP55 Compliance Structure Protection from low pressure jet, rain Water or any other Natural reason, & level of harmful dust
Cable Entry	Through IP Rating PG Cable entry Glands - Options *PG 7,PG 9,PG 11, PG 16, PG 19, PG 25, PG 29, PG 36
Available Depth(s)	Available in Multiple Depth like 200mm 300mm 400mm 500mm 600mm (400mm is standard)



OUTDOOR RACKS

Product Part No.	Height in U	Overall Height	Usable Height	Overall Width	Usable Width	Overall Depth	Usable Depth
INN-15U O/D 300MMD	15U	780mm	402mm	550mm	482.6mm (19 Inch)	300mm	260 mm
INN-15U O/D 400MMD	15U	780mm	402mm	550mm	482.6mm (19 Inch)	400mm	340 mm
INN-15U O/D 500MMD	15U	780mm	402mm	550mm	482.6mm (19 Inch)	500mm	440 mm
INN-15U O/D 600MMD	15U	780mm	402mm	550mm	482.6mm (19 Inch)	600mm	540 mm
INN-15U O/D 650MMD	15U	780mm	402mm	550mm	482.6mm (19 Inch)	650mm	565 mm

18U Wall Mount Pole Mount IP55 Outdoor Cabinet



OUTDOOR RACKS

Application	Network Switches/ Telecom, Wi-Fi, Surveillance, Network & Surveillance, Fiber Management , Solar Projects
Forte	Smart City Projects Safe City Surveillance Projects City Wi-Fi Projects Solar Fiber Projects
Material	CRCA Steel Single Wall, Thickness 0.8 mm * Galvanized Steel &Stainless Options are available On Requirement)
Front Door	Lockable steel door with gasket sealing
Canopy	Integrated Canopy on top, coverage from front door side
Cable Entry Cut	Top/ Bottom
Mounting Channels	2 Pair Heavy Duty (1.5mm) Vertical Mounting Rail for equipment mounting; *Height as per Rack Unit. Fully adjustable 19" mounting Channels, mounting rails can be adjusted as per requirement
Cooling Option	2 Fan option for hot air execution *Extra hood on Door Fan Cooled Cabinet through Dual Fan Option (Pelletier cooling is optional)
Load Bearing Capacity	Up to 35 -40 KG *(Customized Cabinet with load bearing capacity of 100kg)
Construction	Welded Galvanized Plain Steel Construction 1.2 mm Thick Load Bearing angles are 1.5 mm
Power Distribution Unit	6 Socket 5AMP Indian round pin amp (15AMP Socket, Universal Socket, IEC Socket With MCB is Optional)
Cable Management	Horizontal PVC (Optional)
Glass	Toughened Glass 4mm
Fix Shelf/Cantilever Shelf	255mm to 455mm
Color	Light Grey Powder Coated (RAL 7035) and RAL 7032 /Black (as per Requirement)
DIN	19 Inch Maintain
Locking Arrangement	Dual (Cam Lock & Pad lock on door)
Pole Mount Kit	Thickness- 2.5mm -3.0mm *Pole Mount Bracket with Thickness 20mm X 200mm Long Bolt Structure
Logistic Packaging	For Domestic Supply: 3 PLY Corrugation Box For Export Supply: 5 PLY Corrugation Box (With Safety Handling Sticker)
Protection Rating	Rating IP55 Compliance Structure Protection from low pressure jet, rain Water or any other Natural reason, & level of harmful dust
Cable Entry	Through IP Rating PG Cable entry Glands - Options *PG 7,PG 9,PG 11, PG 16, PG 19, PG 25, PG 29, PG 36
Available Depth	870MM
Plinth	Base Plinth 2.5mm Thick 4" Height

Product Part No.	Height in U	Overall Height	Usable Height	Overall Width	Usable Width	Overall Depth	Usable Depth
INN-18U O/D POLE MOUNT & FLOOR STANDING	18U	1050MM Exclude Base Pad & Canopy (41") With canopy & Base Plinth 48"	800MM (31.50")	670MM With Canopy- 720MM	482.6mm	870MM (34")	820MM (22")
					(19 Inch)		

OUTDOOR RACKS

20U Wall Mount Pole Mount IP55 Outdoor Cabinet

Application	Network Switches/ Telecom, Wi-Fi, Surveillance, Network & Surveillance, Fiber Management , Solar Projects
Forte	Smart City Projects Safe City Surveillance Projects City Wi-Fi Projects Solar Fiber Projects
Material	CRCA Steel Single Wall, Thickness 0.8 mm * Galvanized Steel &Stainless Options are available On Requirement)
Front Door	Lockable steel door with gasket sealing
Canopy	Integrated Canopy on top, coverage from front door side
Cable Entry Cut	Top/ Bottom
Mounting Channels	2 Pair Heavy Duty (1.5mm) Vertical Mounting Rail for equipment mounting; *Height as per Rack Unit. Fully adjustable 19" mounting Channels, mounting rails can be adjusted as per requirement
Cooling Option	2 Fan option for hot air execution *Extra hood on Door Fan Cooled Cabinet through Dual Fan Option (Pelletier cooling is optional)
Load Bearing Capacity	Up to 35 -40 KG *(Customized Cabinet with load bearing capacity of 100kg)
Construction	Welded Galvanized Plain Steel Construction 1.2 mm Thick Load Bearing angles are 1.5 mm
Power Distribution Unit	6 Socket 5AMP Indian round pin amp (15AMP Socket, Universal Socket, IEC Socket With MCB is Optional)
Cable Management	Horizontal PVC (Optional)
Glass	Toughened Glass 4mm
Fix Shelf/Cantilever Shelf	255mm to 455mm
Color	Light Grey Powder Coated (RAL 7035) and RAL 7032 /Black (as per Requirement)
DIN	19 Inch Maintain
Locking Arrangement	Dual (Cam Lock & Pad lock on door)
Pole Mount Kit	Thickness- 2.5mm -3.0mm *Pole Mount Bracket with Thickness 20mm X 200mm Long Bolt Structure
Logistic Packaging	For Domestic Supply: 3 PLY Corrugation Box For Export Supply: 5 PLY Corrugation Box (With Safety Handling Sticker)
Protection Rating	Rating IP55 Compliance Structure Protection from low pressure jet, rain Water or any other Natural reason, & level of harmful dust
Cable Entry	Through IP Rating PG Cable entry Glands - Options *PG 7,PG 9,PG 11, PG 16, PG 19, PG 25, PG 29, PG 36
Available Depth (s)	Available in Multiple Depth like 200mm 300mm 400mm 500mm 600mm (400mm is standard)

Product Part No.	Height in U	Overall Height	Usable Height	Overall Width	Usable Width	Overall Depth	Usable Depth
INN-20U O/D POLE MOUNT & FLOOR STANDING	20U	1300MM, including Base Pad & Canopy (44")	889MM (35")	600MM With Canopy- 700MM	482.6mm	600MM	570MM (22")
					(19 Inch)		

JUNCTION BOX

20U Wall Mount Pole Mount IP55 Outdoor Cabinet

Height Available	Width (in MM)	Depth Available (in MM)	Description/ Specifications	
All Customized (According to client's requirements)	All Customized (According to client's requirements)	All Customized (According to client's requirements)	Application	Smart City Projects Safe City Projects City Wi-Fi Projects CCTV surveillance Project Defense Sector Smart fencing Laser Fencing Projects
			Standard Accessories	Fan- 2/4 Equipment Shelves Cable Managers Pole-Mount Kit Fresh Air Suction Filter Cable entry PG Glands Mounting Plate Single/Dual Lock with pad Lock Provision for additional security
			Additional Accessories - customized	Remote Monitoring Door Access Notification GSM based Alarm
			Note	1. Customization option is available for all sizes. 2. Different options in powder coating are available



Outdoor Rack

Outdoor Floor, Wall, Pole Mount Rack

Features	Description
Technical Standard	DIN 41494
Construction	Welded
Front Door	Lockable (provided with exhaust fan with canopy-optional)
Construction	Welded
Standard Finish & Color	Powder Coating (Black / Grey / Customized)
Top / Bottom	Welded with necessary ventilation & cable entry cutouts on the bottom panel
Mounting	Adjustable Mounting Slots
Load Bearing Capacity	Floor mount Rack- 400-700 KG
	Wall, Pole mount Rack- 40 KG
Specialty	Highly weather-proof & resistant atmospheric corrosion, making them ideal for prolonged outdoor usage
Accessories	<ul style="list-style-type: none"> Cantilever Shelf Fixed Shelf Cable Manager Castor Wheel Grouting Bracket Adjustable Levelers Plinth Cable Basket Fans & Canopy Support Angles Earthing Kit
Note	<ol style="list-style-type: none"> 1. Customization option is available for all sizes. 2. Different options in powder coating are available

Model Name	Height in U	Total Height (in MM)	Total Width (in MM)	Total Depth (in MM)	Standard
INN-O/D-001	4U	250	575	300-600	19"
INN-O/D-002	6U	350	575	300-600	19"
INN-O/D-003	9U	500	575	300-600	19"
INN-O/D-004	12U	730	575	300-600	19"
INN-O/D-005	15U	890	600	300-600	19"
			650		
			700		
			800		
INN-O/D-006	18U	950	600	400-1000	19"
			650		
			700		
			800		
INN-O/D-007	20U	1090	600	400-1000	19"
			650		
			700		
			800		

INN-O/D-008	22U	1100	600	400-1000	19"
			650		
			700		
			800		
INN-O/D-009	24U	1200	600	400-1000	19"
			650		
			700		
			800		
INN-O/D-0010	28U	1400	600	400-1000	19"
			650		
			700		
			800		
INN-O/D-0011	30U	1475	600	400-1000	19"
			650		
			700		
			800		
INN-O/D-0012	32U	1575	600	400-1000	19"
			650		
			700		
			800		
INN-O/D-0013	36U	1750	600	400-1000	19"
			650		
			700		
			800		
INN-O/D-0014	42U	2150	600	400-1000	19"
			650		
			700		
			800		



RACK ACCESSORIES

Model Name	Model Name	Description
INN/H/PDU/001	6S X 5AMP: 6 sockets: 6 AMP	With Switch & Indicator
INN/H/PDU/002	6S X 15AMP: 6 sockets: 6/15AMP	With Switch & Indicator
INN/H/PDU/003	10S X 5AMP: 10 sockets: 6 AMP	With Switch & Indicator
INN/H/PDU/004	10S X 5AMP: 10 sockets: 6/15 AMP	With Switch & Indicator
INN/H/PDU/005	12S X 15AMP: 12 sockets: 6/15AMP	With Switch & Indicator
INN/H/PDU/006	10M X 15: 10 sockets: 6/15AMP	With MCB
INN/H/PDU/007	12M X 15 AMP: 12 sockets: 6/15AMP	With MCB



RACK ACCESSORIES

Name	Description
Color	Black, Ivory
Material	Mild Steel(powder coated)
Size(in MM)	240(L)X240(W)X150(H)
Width	Adjustable (150MM to 225MM)
Loading Capacity	20kg
Technology	Machine Cutting
Accessories	Swivel 4 Castor wheels (2 with brakes & 2 regular wheels) Rubber shock absorbers Screws & Nuts (Hardware)
Features	Lockable wheels (to station Trolley at one place) Adjustable design to fit all sizes of CPUs Easy to handle, transport & assemble Excellent finish & Durable



RACK ACCESSORIES

Part Name	Model Name
INN-CNT-001	1U - 435MM (Front)
	1U - 250MM (Depth)
	Can be used from 2 TO 50U (Customization available) for all 19" maintained equipment



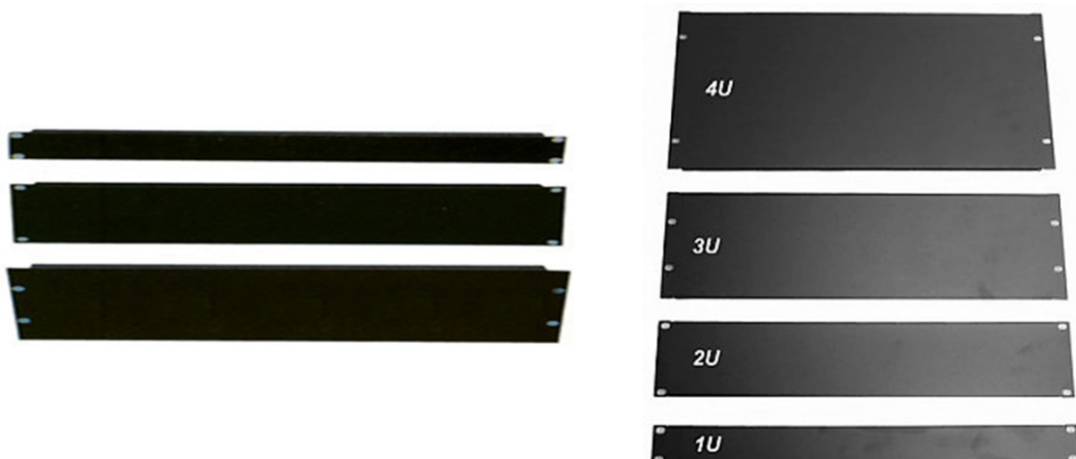
Keyboard Tray/Sliding Tray

Part Name	Model Name
INN-KBT-001	For up-to 1000MM Rack



Blank Panel

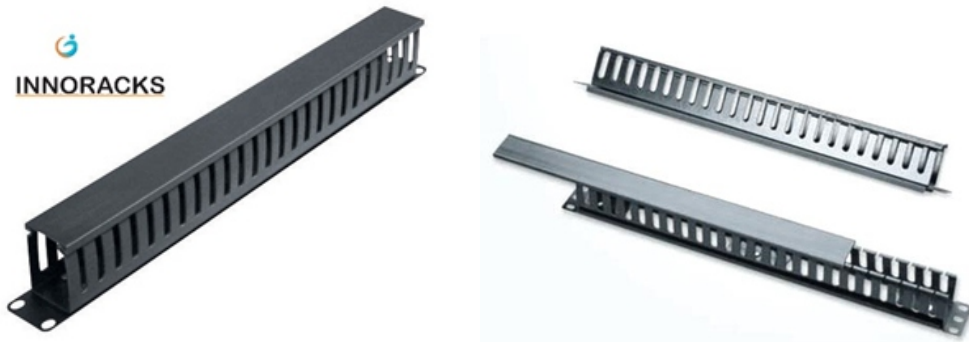
Part Name	Model Name
INN-BLANK-001	1U- Blank Panel
INN-BLANK-002	2U- Blank Panel



RACK ACCESSORIES

Cable Manager

Part Name	Model Name	Used In
INN-PVC-001	PVC Cable Manager	2U- 42U
INN-MET-002	Metallic Cable Manager	2U- 42U



Shelf

Part Name	Model Name	Used In
INN-SHELF-001	375MM	RACKS 600MM X 600MM
INN-SHELF-002	475MM	RACKS 600MM X 600MM
INN-SHELF-003	475MM	RACKS 600MM X 600MM
		RACKS 800MM X 800MM
INN-SHELF-004	525MM	RACKS 600MM X 600MM
		RACKS 800MM X 800MM
INN-SHELF-005	725MM	RACKS 800MM X 1000MM
INN-SHELF-006	925MM	RACKS 600MM X 1200MM
		RACKS 800MM X 1200MM



SERVER RACKS

Height Available	Width (in MM)	Depth Available (in MM)	Description/ Specifications	
12U 15U 17U 18U 22U 24U 27U 32U 36U 42U 45U 48U 50U (Can be customized)	600MM 800MM	600MM 800MM 1000MM 1200MM	Application	Network Switches/Routers/Firewall/ DVR/NVR/Audio- Visual Equipment/ Low Depth Servers, Tower Servers & other 19" Electronic & Telecom Equipment
			Material	CRCA
			Front Door	Glass (Toughened Glass 4mm) / Metal Door with Key Lock
			Mounting Channels	2-4 Pair Heavy Duty (2.0mm)
			Cooling Option	4 fan Provision mounted on Top Panel
			Load Bearing Capacity	Up to 600-1000 KG
			Construction	Front Glass & full Perforated Door option, Rear Steel Perforated Door,
			Side Panels	Detachable side panels with perforation

Standard Accessories:

- Cantilever tray/ Keyboard Tray/ Sliding Tray
- Fix Shelf/ Shelf Tray (Additional Equipment Shelf)
- Cooling Fan
- Power Distribution Unit (PDU)
- Equipment Mounting Hardware
- Cable Managers
- Earthing Kit
- Castor wheel set of 4

Features	Simplification
Robustness	Having modularity & flexibility enable Innoracks cabinets to meet challenging environments, climates and harsh conditions found in outdoor or factory settings
Expedient Installation & Sustenance	Innoracks' racks & enclosures optimized for easy installation with managing cables and integrating power distribution unit.
Top-notch Ventilation	Innoracks networking cabinets have integral ventilation cut-outs in the doors and side covers promoting air circulation throughout.
Convenient Locking mechanism	Innoracks offers complete range of locking system for rack security, which can be customized, customer can select the locking system based on the management & site requirement.
Favorable Dismantling	Innoracks have removable front and rear doors and removable side panels so it can be disassemble and transport easily.
Commodious Cable Entry	Cable entries are located at the top and bottom of the cabinet with professional plastic stringing holes for cable winding, equipment adjustment and maintenance.
Easy to Set-up	Racks & enclosure are optimized for easy installation with managing cables and integrating power distribution unit.

SERVER RACKS

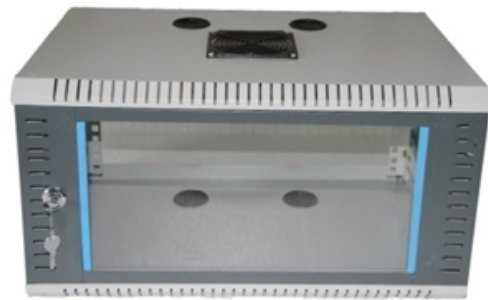
Other Features:

- Same model covering all U requirements.
- Capacity to load heavy equipment easily
- Allows maximum airflow inside the racks
- Facilitates comfortable & smooth server installation without any tool or support
- Helps IT engineers to install equipment without mismatch
- Enables external electrical grounding
- Accommodates small depth IT equipment
- Removes hot air inside racks and helps maintain the temperature
- Good expandability & upgradability
- Adjustable mounting depth
- Sturdy Construction, Excellent Finish
- Optimum Performance
- Beautiful Appearance



WALL-MOUNT/POLE-MOUNT RACKS

Height Available	Width (in MM)	Depth Available (in MM)	Description/ Specifications	
2U 3U 4U 6U 9U 12U 15U	550MM & Internal- 19INCHES	350 400 500 600 650	Application	Network Switches/Routers/Firewall/ DVR/NVR/Audio- Visual Equipment/ Low Depth Servers & other 19" Electronic
			Material	CRCA Steel Single Wall
			Front Door	Glass (Toughened Glass 4mm) / Metal Door with Key Lock
			Mounting Channels	2 Pair Heavy Duty (1.2mm)
			Cooling Option	1-2 fan Provision mounted on Top Panel
			Load Bearing Capacity	Up to 30 -40 KG
			Construction	Dismantle/Welded Construction Overall 0.8mm Thickness, Load Bearing angles are 0.8 MM
			Side Panels	Integrated side panels with perforation



Height Available	Width (in MM)	Depth Available (in MM)	Description/ Specifications	
18U 24U 27U 32U 36U 42U (Can be customized)	600MM 800MM	800MM 1000MM	Application	Network Switches/Routers/Firewall/ DVR/NVR/Audio- Visual Equipment/ Low Depth Servers & other 19" Electronic
			Material	CRCA
			Front Door	Glass (Toughened Glass 4mm) / Metal Door with Key Lock
			Mounting Channels	2-4 Pair Heavy Duty (2.0mm)
			Cooling Option	4 fan Provision mounted on Top Panel
			Load Bearing Capacity	Up to 600-1000 KG
			Construction	Front Glass & full Perforated Door option, Rear Steel Perforated Door,
			Side Panels	Detachable side panels with perforation

WALL-MOUNT/POLE-MOUNT RACKS

Standard Accessories:

- Cantilever tray/ Keyboard Tray/ Sliding Tray
- Fix Shelf/ Shelf Tray (Additional Equipment Shelf)
- Cooling Fan
- Power Distribution Unit (PDU)
- Equipment Mounting Hardware
- Cable Managers
- Castor Wheels
- Blank Panels

Features	Simplifications
Robustness	Modularity & flexibility of Innoracks cabinets enable to meet challenging rugged environments and harsh conditions found in outdoor or factory set-up.
Discernibility	Tempered glass on front door provides good visibility for observation of operating equipment.
Affirmative Dismantling	Easily removable front door for access
Commodious Cable Entry	Cable entry access options from top of cabinet

Other Features:

- Same model covering all U requirements.
- Capacity to load heavy equipment easily
- Allows maximum airflow inside the racks
- Facilitates comfortable & smooth server installation without any tool or support
- Helps IT engineers to install equipment without mismatch
- Enables external electrical grounding
- Accommodates small depth IT equipment
- Removes hot air inside racks and helps maintain the temperature
- Good expandability & upgradability
- Adjustable mounting depth
- Sturdy Construction, Excellent Finish
- Optimum Performance
- Beautiful Appearance





INNORACKS

We Ipack Solutions are unique in the manufacturing of server racks. We make the complete vertically integrated solution for the assembling of server racks and cabinets with varying rack unit sizes, part no complexity.



Phone:
+91 9817455686



Mail:
info@innoracks.in



Address:
Plot No. 33, 1/2/1, Shahpur Road Vill. Sikri,
Ballabgarh Faridabad, HR, 121004